

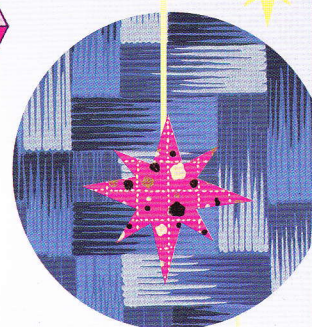
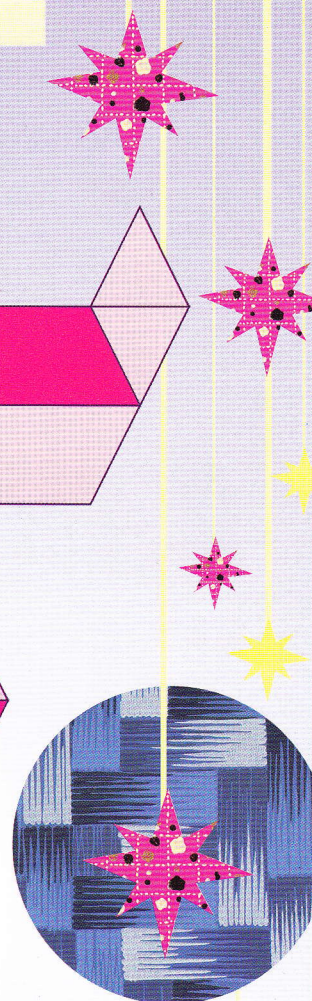
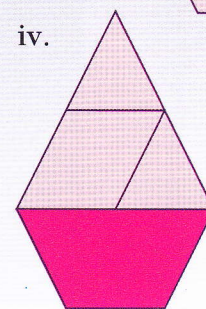
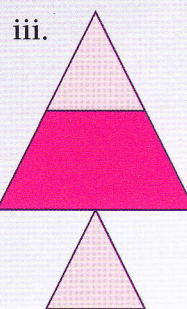
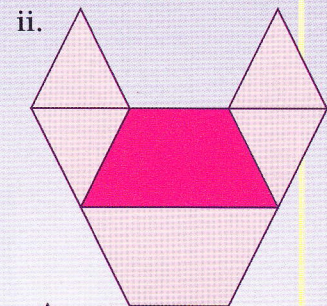
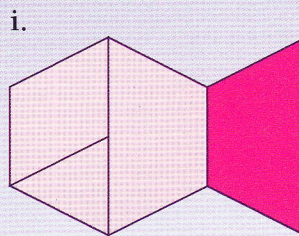
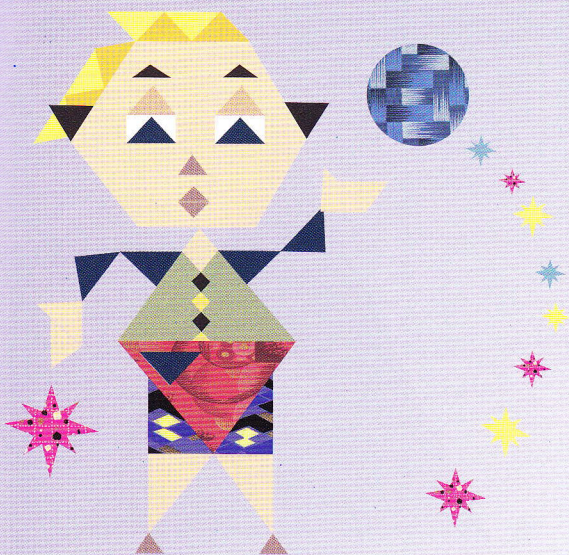
Puzzling Patterns

You need ☒ pattern blocks

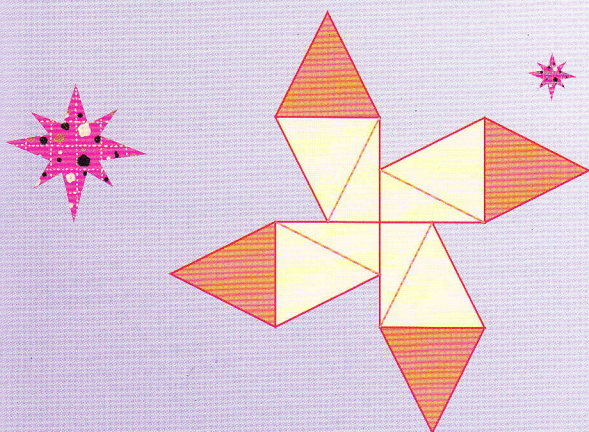
☒ a classmate

Activity

Hamish created these designs using pattern blocks: a fish, an animal face, a tree, and a yacht:



1. What fraction of each design (i–iv) is the shaded trapezium?
2. What fraction of each design (i–iv) is made using small triangles?
3. Hamish uses pattern blocks to help him create this windmill design:



- a. What fraction of the design is orange?
- b. What fraction of the design is this shape? →
4. Make your own design using pattern blocks, then make up a fraction question for a classmate to solve.